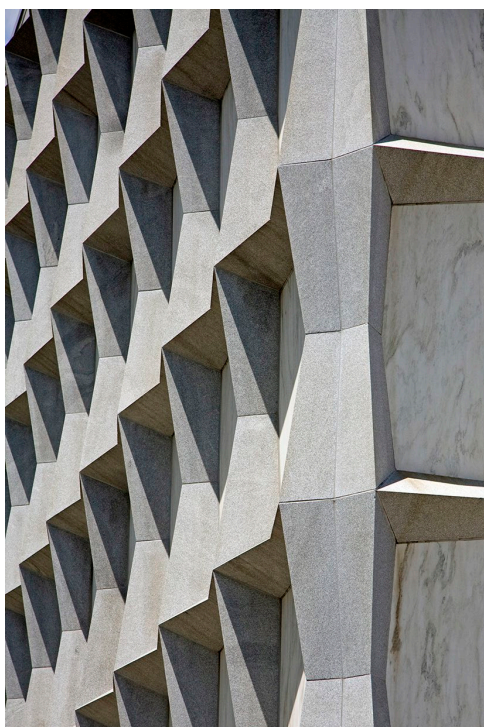
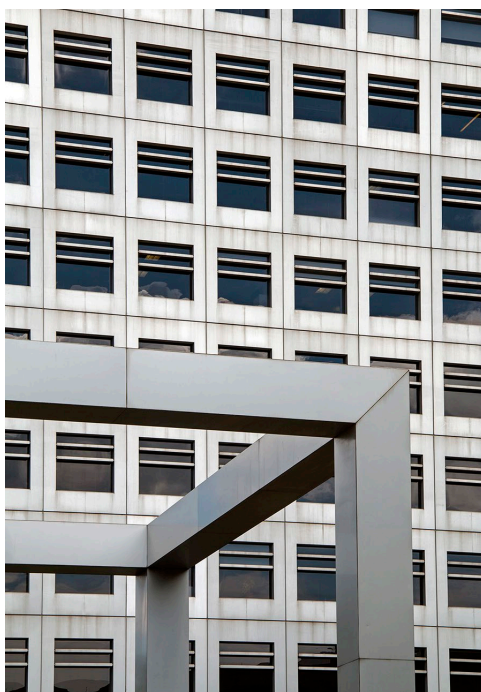


GRIDS

OF CONNECTICUT



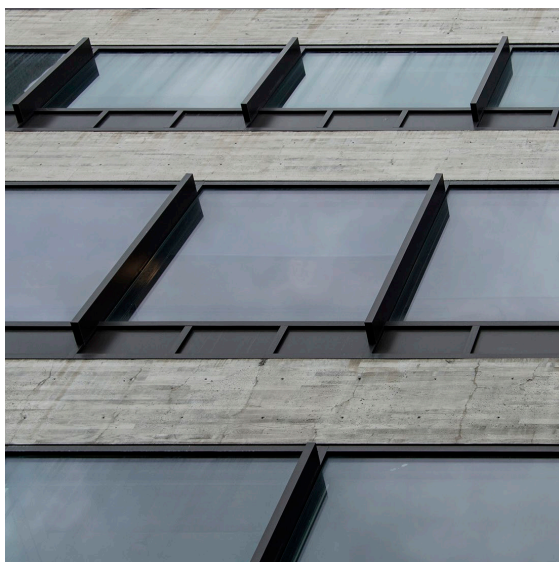
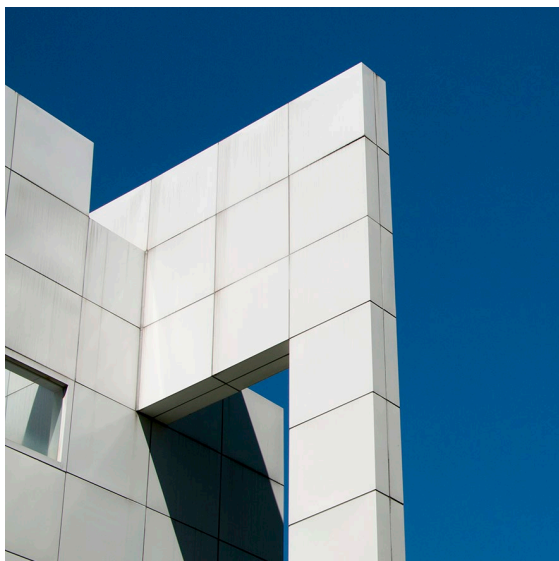
KEVIN ROCHE JOHN DINKELOO AND ASSOCIATES
KNIGHTS OF COLUMBUS, NEW HAVEN, 1969

GORDON BUNSHAFT/SOM
BEINECKE RARE BOOKS LIBRARY, NEW HAVEN, 1963

ULRICH FRANZEN
CHAMPION INTERNATIONAL, STAMFORD, 1983

MARCEL BREUER & ROBERT GATJE
PIRELLI BUILDING, NEW HAVEN, 1970

photographs by Bob Gregson



As an avocation, Gregson travels widely seeking out and photographing Modern architecture. These photographs featuring grids are of institutional and commercial buildings in his home state by leaders of the Modern Movement.

RICHARD MEIER

HARTFORD SEMINARY, HARTFORD, 1969

PAUL RUDOLPH

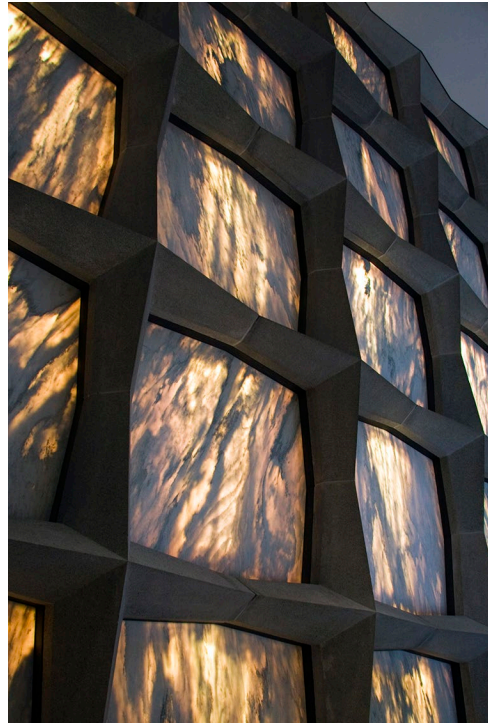
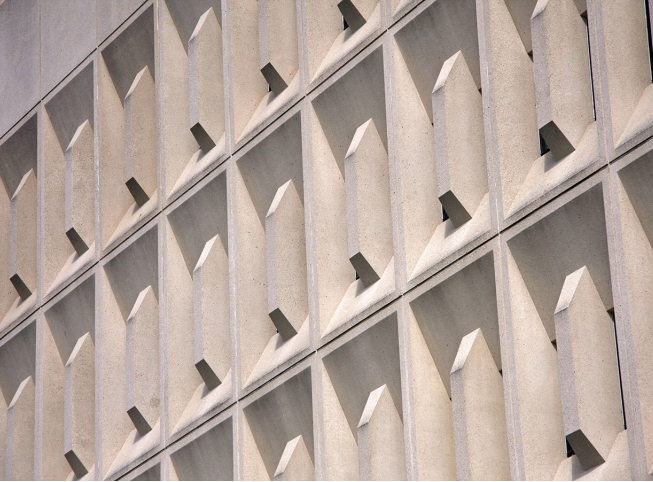
YALE "A&A" BUILDING, NEW HAVEN, 1963

LOUIS KAHN

YALE UNIVERSITY ART GALLERY, NEW HAVEN, 1954

WARREN PLATNER

KENT MEMORIAL LIBRARY, SUFFIELD, 1972

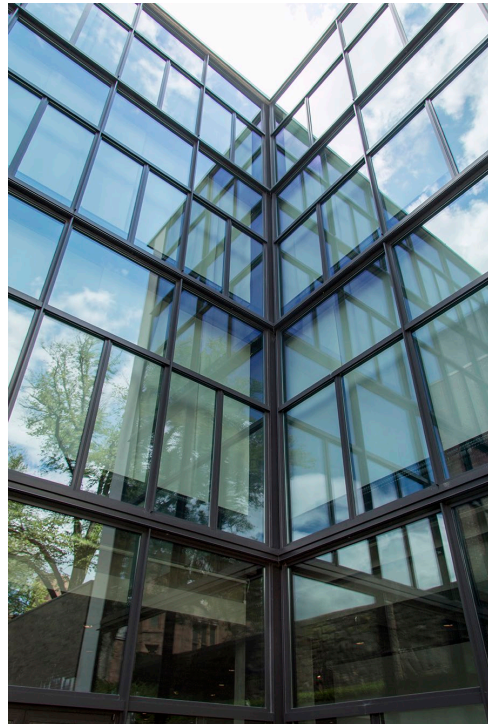


MARCEL BREUER & HAMILTON SMITH
BECTON LABORATORY, YALE, NEW HAVEN, 1970

GORDON BUNSHAFT/SOM
CONNECTICUT GENERAL LIFE, BLOOMFIELD, 1957

GORDON BUNSHAFT/SOM
BEINECKE RARE BOOKS LIBRARY, NEW HAVEN, 1963

MARCEL BREUER, WITH O'CONNOR & KILHAM
BANTAM ELEMENTARY SCHOOL, BANTAM, 1956



MAX ABRAMOVITZ, HARRISON AND ABRAMOVITZ
PHOENIX MUTUAL LIFE INSURANCE, HARTFORD, 1963

KOHN PEDERSEN FOX
GENERAL RE HEADQUARTERS, STAMFORD, 1985

LOUIS KAHN
YALE UNIVERSITY ART GALLERY, NEW HAVEN, 1954

LOUIS KAHN
YALE UNIVERSITY ART GALLERY, NEW HAVEN, 1954